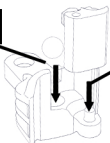


1 Use toothpick with tip cut back to burnish cylinder

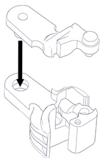
4 Apply tiny dot of thick super glue



2 Load Ball

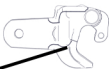


3 Load Knuckle



5 Add bottom cover

6 Add tiny dot of thick super glue

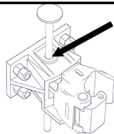


7 Install pilot into steam box

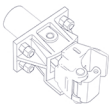
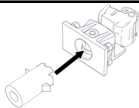
8 Secure with metal pin.



9 Cut and glue pin to desired length



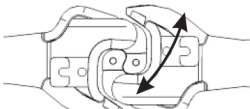
10 insert mounting post and glue post to steam box



11 Install into a locomotive



Use an ordinary pencil to color mating surfaces and provide lubrication



Mate two couplers upside down so they won't lock - then work them open and closed repeatedly to break them in.

Now turn the couplers right side up and work them vertically while first pushing them together, then while pulling them apart.

